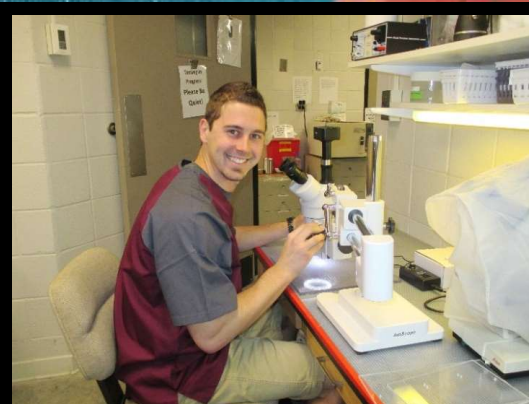
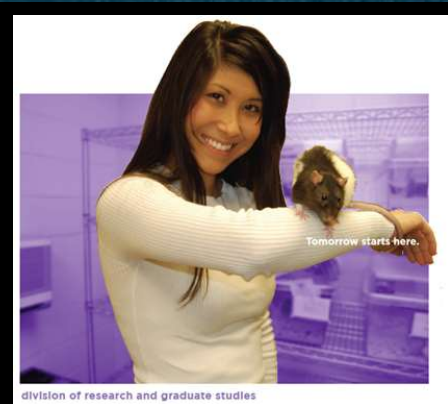




Advising for the Multidisciplinary Studies Program in Neuroscience

neuroscience.ecu.edu



Katie Clements receives the Marine Biological Laboratory training fellowship award in neurobiology



PhD student Katie Clements from the Issa lab in the department of biology is among only 10 students nationally to be accepted into the Marine Biological Laboratory neurobiology course. Acceptance is highly competitive and is accompanied with the prestigious \$8,000 MBL fellowship Award. The course provides aspiring neuroscientists with intensive training in cutting-edge techniques in molecular and cellular neuroscience.

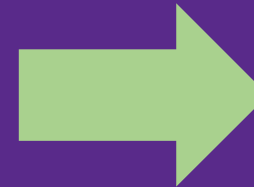




Dr. Tuan Tran
Neuroscience Program Director
Email: trant@ecu.edu

Semester 1
“Intended Major”

General
Advising
through THCAS



Semester 2

Major Advising
through
Neuroscience

Thomas Harriot College of Arts and Sciences (THCAS) Academic Advisors



Rhonda "LeAnn" Etheridge
Director



John Trifilo
Associate Director

Semester 1 – Your THCAS
Academic Advisor is
shown in:

- ✓ Pirate Port
- ✓ Banner
- ✓ DegreeWorks

Semester 2 – Transition to
Dr. Tran for major advising



**Peggy
Newsome**



**Courtney
Rosemond**



**Alexandra
Ayran**



**Michael
Goodhart**



**Chalisa
Harrell**



**Shelby
Wiggins**
Student Worker



Graduation Requirements for the BA and BS Multidisciplinary Studies – Neuroscience Concentration (120 SH min)



General Education (40 SH)

Core (29-30 SH)

- Principles of Biology II and Laboratory II
- General Chemistry II and Laboratory II
- Introductory Psychology
- Statistics (several options in DegreeWorks)
- Research Methods in Psychology
- Introduction to Neuroscience
- Physics (General Physics or University Physics)
- Senior Thesis

BA: 101 + 19 free electives

BS: 101 + 19 free electives

See “**How to Obtain
Neuroscience
Research
Experience**” video

Mentored Research in Neuroscience (5-6 SH)

Senior Capstones (6 SH)

Major Electives

- If BA: 12 SH Foreign Language through level 2004 (SH); 9 SH major electives
- If BS: 21 SH major electives

Free electives to complete 120 SH requirement



Neuroscience

Sample 4-Year Plan for BA Degree

- BIOL 1100/1101
- CHEM 1150/1151
- Will meet Science requirement (min 7 SH + 1 lab)
- **Are pre-requisites for the core:**
 - BIOL 1200/1201
 - CHEM 1160/1161
- MATH 1065 is pre- or co-requisite for CHEM 1150

BA in Multidisciplinary Studies - Neuroscience Concentration 4 Year Plan (Rev. 03.14.21)
Minimum Hours Needed to Graduate: 120 SH (see restrictions at bottom)

Freshman Year			
Fall Semester		Spring Semester	
ENGL 1100	3	Social Science	3
BIOL 1100, 1101	3, 1	BIOL 1200, 1201	3, 1
CHEM 1150, 1151	3, 1	CHEM 1160, 1161	3, 1
PSYC 1000▲	3	MATH 2228 (3), MATH 2283 (3), BIOS 1500 (3) or PSYC 2101 (4)	3 or 4
MATH 1065	3	Any EXSS	1
Total Semester Hours	17	Total Semester Hours	15-16

Sophomore Year			
Fall Semester		Spring Semester	
PHYS 1250, 1251 or PHYS 2350	3, 1 4	PHYS 1260, 1261 or PHYS 2360	3, 1 4
PSYC 2210	4	Social Science	3
PSYC 3310 (cross-listed NEUR 3310)	3	HLTH 1000	2
ENGL 2201	3	NEUR 2201, PSYC 4312 or PSYC 4315*	2 or 3
Foreign Language	3	Fine Arts or Humanities	3
		Foreign Language	3
Total Semester Hours	17	Total Semester Hours	17-18

Junior Year			
Fall Semester		Spring Semester	
Fine Arts or Humanities	3	Fine Arts or Humanities	3
Foreign Language	3	Foreign Language	3
Neuroscience Elective	3	Neuroscience Elective	3
NEUR 2201, PSYC 4312 or PSYC 4315*	2 or 3	NEUR 2201, PSYC 4312 or PSYC 4315*	2 or 3
Free Elective	3	Free Elective	3
Total Semester Hours	14-15	Total Semester Hours	14-15

Senior Year			
Fall Semester		Spring Semester	
NEUR 4950 Thesis I* (senior)	3	NEUR 4951 Thesis II* (senior)	3
PSYC 4250** (senior capstone 1)	3	NEUR 4901** (senior capstone 2)	3
Neuroscience Elective	3	Free Elective	3
Free Elective	3	Free Elective	3
Free Elective	3		
Total Semester Hours	15	Total Semester Hours	12

*Requires having a faculty mentor with a research lab; contact Dr. Tran for specifics

**Requires Dr. Tran's approval; PSYC 4250 must be Dr. Tran's section: Adv Topics-Neurobiology of Learn & Mem.

▲Counts as a Social Science General Education course

In the undergraduate catalog: SC = Science, SO = Social Science, HU = Humanities, FA = Fine Arts, GE = General Education



Neuroscience

From the Undergraduate Catalog

Chemistry

CHEM 1150 - General Chemistry I

CHEM 1150 - General Chemistry I



3 F,S,SS1,SS2 GE:SC

3 lecture hours per week. For science majors. P: Appropriate score on math section of SAT/ACT or ECU Department of Mathematics Placement Exam, or grade of C (2.0) or higher in [MATH 1065](#); C: [MATH 1065](#) unless already completed with grade of C (2.0) or higher; [CHEM 1151](#). Basic principles and laws of chemistry. Topics include measurements, reactions and stoichiometry, thermochemistry, atomic structure, periodicity, bonding and molecular structure, and states of matter.

Sample 4-Year Plan for BS Degree

BS in Multidisciplinary Studies - Neuroscience Concentration 4 Year Plan (Rev. 03.14.21)

Minimum Hours Needed to Graduate: 120 SH (see restrictions at bottom)

Freshman Year			
Fall Semester		Spring Semester	
ENGL 1100	3	Social Science	3
BIOL 1100, 1101	3, 1	BIOL 1200, 1201	3, 1
CHEM 1150, 1151	3, 1	CHEM 1160, 1161	3, 1
PSYC 1000▲	3	MATH 2228 (3), MATH 2283 (3), BIOS 1500 (3) or PSYC 2101 (4)	3 or 4
MATH 1065	3	Any EXSS	1
Total Semester Hours	17	Total Semester Hours	15-16

Sophomore Year			
Fall Semester		Spring Semester	
PHYS 1250, 1251 or PHYS 2350	3, 1 4	PHYS 1260, 1261 or PHYS 2360	3, 1 4
PSYC 2210	4	Social Science	3
PSYC 3310 (cross-listed NEUR 3310)	3	HLTH 1000	2
ENGL 2201	3	NEUR 2201, PSYC 4312 or PSYC 4315*	2 or 3
Neuroscience Elective	3	Fine Arts or Humanities	3
		Neuroscience Elective	3
Total Semester Hours	17	Total Semester Hours	17-18

Junior Year			
Fall Semester		Spring Semester	
Fine Arts or Humanities	3	Fine Arts or Humanities	3
Neuroscience Elective	3	Neuroscience Elective	3
Neuroscience Elective	3	Neuroscience Elective	3
NEUR 2201, PSYC 4312 or PSYC 4315*	2 or 3	NEUR 2201, PSYC 4312 or PSYC 4315*	2 or 3
Free Elective	3	Free Elective	3
Total Semester Hours	14-15	Total Semester Hours	14-15

Senior Year			
Fall Semester		Spring Semester	
NEUR 4950 Thesis I* (senior)	3	NEUR 4951 Thesis II* (senior)	3
PSYC 4250** (senior capstone 1)	3	NEUR 4901** (senior capstone 2)	3
Neuroscience Elective	3	Free Elective	3
Free Elective	3	Free Elective	3
Free Elective	3		
Total Semester Hours	15	Total Semester Hours	12

*Requires having a faculty mentor with a research lab; contact Dr. Tran for specifics

**Requires Dr. Tran's approval; PSYC 4250 must be Dr. Tran's section: Adv Topics-Neurobiology of Learn & Mem.

▲Counts as a Social Science General Education course

In the undergraduate catalog: SC = Science, SO = Social Science, HU = Humanities, FA = Fine Arts, GE = General Education

Plans can be found
on the
Neuroscience
website.



Neuroscience

Advanced Placement Credit

Placement Test	Score	ECU Course	Credits
American Govt. & Pol.	3, 4, 5	POLS 1010	3
Art History	3, 4, 5	ART 1906, 1907	6
Biology	3	BIOL 1100, 1101	4
Biology	4, 5	BIOL 1100-01/1200-01	8
Calculus AB (AB subgrade rec. the same credits)	3, 4, 5	MATH 2171	4
Calculus BC	3, 4, 5	MATH 2171, 2172	8
Chemistry	3	CHEM 1150, 1151	4
Chemistry	4, 5	CHEM 1150-51/1160-61	8
Comparative Gov't & Politics	3, 4, 5	POLS 2010	3
Computer Science A	3, 4, 5	CSCI 2610	3
Computer Science Principles	3, 4, 5	CSCI 1000	3
Economics, Macro	3, 4, 5	ECON 2133	3
Economics, Micro	3, 4, 5	ECON 2113	3
English Lang & Comp	3	ENGL 1100	3
English Lang & Comp	4, 5	ENGL 1100, 2201	6
English Lit & Comp	3	ENGL 1100	3
English Lit & Comp	4, 5	ENGL 1000, 1100	6
Environmental Science	3, 4, 5	BIOL 1060	5
French Language	3, 4, 5	FREN 1001-02/2003-04	12
German Language	3, 4, 5	GERM 1001-02/2003-04	12

Geography, Human	3, 4, 5	GEOG 1000	3
History, American	3, 4, 5	HIST 1050, 1051	6
History, European	3, 4, 5	HIST 1030, 1031	6
History, World	3, 4, 5	HIST 1030, 1031	6
Italian Language & Culture	3, 4, 5	ITAL 1001-02/2003-04	12
Latin Language	3, 4, 5	LATN 1001-02/2003-04	12
Music Theory (non-majors only)	3, 4, 5	MUSC 1008	3
Physics 1 Algebra-Based	3, 4, 5	PHYS 1250, 1251	3, 1
Physics 2 Algebra-Based	3, 4, 5	PHYS 1260, 1261	3, 1
Physics C: Mechanics	3, 4, 5	PHYS 2350, 1251	4, 1
Physics C: Elec & Magnetism	3, 4, 5	PHYS 2360, 1261	4, 1
Psychology	3, 4, 5	PSYC 1000	3
Spanish Language	3, 4, 5	SPAN 1001-02/2003-04	12
Statistics	3	MATH 2228	3
Studio Art, 2-D Design	3, 4, 5	ART 1005	3
Studio Art, 3-D Design	3, 4, 5	ART 1015	3
Studio Art, Drawing	3, 4, 5	ART 1020	3

College Transfer Credit

Personal Information **Student** Faculty

Search

Student

Please note that some screens may display users, you MUST 'Logout' of Pirate Port com

Registration

Check your registration status, class schedule and ad

Student Records

View your holds, grades and transcripts

Student Account

View your account summaries, statement/payment hi

Course Equivalencies

View undergraduate transfer course equivalencies

Reverse Transfer(RT) Program

Reverse Transfer Program

Fixed Tuition Information

UNC Fixed Tuition

Degree Works

Course Equivalency

TRANSFER CREDIT ACCEPTED BY EAST CAROLINA UNIVERSITY

Pitt CC		East Carolina University		Credit Hours
Transfer Course	Transfer Course Title	ECU Course	ECU Title	
ACA 122	College Transfer Success	COAD 1XXX	College Transfer Success	1
ACC 120	Financial Accounting	ACCT 2401	Financial Accounting	4
ACC 121	Managerial Accounting	ACCT 2521	Managerial Accounting	4
AHR 111	HVACR Electricity	ITEC 1XXX	HVACR Electricity	3
AHR 112	Heating Technology	ITEC 1XXX	Heating Technology	4
AHR 113	Comfort Cooling	ITEC 1XXX	Comfort Cooling	4
AHR 114	Heat Pump Technology	ITEC 1XXX	Heat Pump Technology	4
AHR 120	HVAC Maintenance	ITEC 1XXX	HVAC Maintenance	2
AHR 211	Residential System Design	ITEC 2XXX	Residential System Design	3
AHR 212	Advanced Comfort Systems	ITEC 2XXX	Adv Comfort Systems	3
AHR 213	HVACR Building Code	ITEC 2XXX	HVACR Building Code	2
AHR 240	Hydronic Heating	ITEC 2XXX	Hydronic Heating	2
ALT 120	Renewable Energy Tech	ITEC 1XXX	Renewable Energy Tech	3
ALT 220	Photovoltaic Sys TEch	ITEC 1XXX	Photovoltaic Sys Tech	3
ALT 240	Wind and Hydro Power Sys	ITEC 1XXX	Wind and Hydro Power Sys	3
ALT 250	Thermal Systems	ITEC 2XXX	Thermal Systems	3
ANT 160	Introduction to Anthropology	ANTH 1000	Intr Anthropology	5
ANT 161	Societies Around the World	ANTH 2010	Soc Around World	5
ANT 210	General Anthropology	ANTH 1000	Intr Anthropology	3
ANT 220	Cultural Anthropology	ANTH 2200	Intro to Cultrl Anth	3
ANT 221	Comparative Cultures	ANTH 2010	Soc Around World	3
ANT 230	Physical Anthropology	ANTH 2015	Intro Biolog Anth	3
ANT 230A	Physical Anthropology Lab	ANTH 2016	Intro Biolog Anth L	1
ANT 240	Archaeology	ANTH 3077	Archaeology	3
ANT 240A	Archaeology Field Lab	ANTH 2XXX	Archaeology Field Lab	1

Select "Course Equivalencies"

Select "State"

Select "Institution"



THOMAS HARRIOT
COLLEGE OF ARTS & SCIENCES

Academic Transcript

Personal Information **Student** Faculty

Search Go

Student

Please note that some screens may display users, you MUST 'Logout' of Pirate Port.com

Registration

Check your registration status, class schedule and aid

Student Records

View your holds, grades and transcripts

Student Account

View your account summaries, statement/payment history

Course Equivalencies

View undergraduate transfer course equivalencies

Reverse Transfer(RT) Program

Reverse Transfer Program

Fixed Tuition Information

UNC Fixed Tuition

Degree Works

TRANSFER CREDIT ACCEPTED BY INSTITUTION -Top-

201830: Nash CC

Subject	Course	Title	Grade	Credit Hours	Quality Points
COMM	2410	Public Speaking	TA	3.000	
MATH	1065	College Algebra	TB	3.000	
MATH	1083	Introduction to Functions	TB	3.000	
MATH	1XXX	College Algebra	TB	1.000	
MATH	1XXX	Precalculus Trig	TB	1.000	
PSYC	1000	Intro Psyc	TC	3.000	

	Attempt Hours	Passed Hours	Earned Hours	GPA Hours	Quality Points	GPA
Current Term:	14.000	14.000	14.000	0.000		0.000

TRANSFER CREDIT ACCEPTED BY INSTITUTION -Top-

000000: AP Credits

Subject	Course	Title	Grade	Credit Hours	Quality Points
BIOL	1060	Environmental Biology	TP	4.000	
BIOL	1061	Environmental Biology Lab	TP	1.000	
BIOL	1100	AP-Biology	TP	3.000	
BIOL	1101	AP-Biology Lab	TP	1.000	
ENGL	1100	Foundations of College Writing	TP	3.000	

	Attempt Hours	Passed Hours	Earned Hours	GPA Hours	Quality Points	GPA
Current Term:	12.000	12.000	12.000	0.000		0.000

Select "Student Records"
 Select "Academic Transcript"
 Submit



Fall Registration Advice

- ENGL 1100 Foundations of College Writing (if closed, you can take in the spring)
- What are your career intentions? Contact me for guidance about whether you need these courses listed in the 4-year plans:
 - BIOL 1100/1200
 - CHEM 1150/1160
 - PHYS courses
- Schedule an advising meeting directly with Dr. Tran:
<https://neuroscience.ecu.edu/schedule-advising-meeting/>

Foreign Language Requirement for BA Degree

Your **Bachelor of Arts** degree requires foreign language through level four (2004)

ECU Offers the following languages:

French (FREN) German (GERM) Ancient Greek (GRK)

Japanese (JAPN) Latin (LATN) Russian (RUSS)

*Spanish (SPAN) (placement test is required for Spanish)

To take online placement test in Spanish, French, or German visit www.ecu.edu/foreign

Look for test under the “resources” link. Instructions are on website

Students typically take the following sequence 1001, 1002, 2003, and 2004. However, students who take the placement test* can receive bypass credit without a grade, only upon successful completion of the course into which they place, as follows:

- Upon passing 1002, students receive bypass credit for 1001.
- Upon passing 2003, students receive bypass credit for 1001, 1002.
- Upon passing 2004, students receive bypass credit for 1001, 1002, 2003.
- Upon passing a course above level 2004, students receive bypass credit for 1001, 1002, 2003, 2004.

**Students may drop down one level if they feel their placement score is inaccurate*

If you are continuing with a language in which you have prior experience, it is recommended to start your foreign language as soon as possible.



ECU

THOMAS HARRIOT
COLLEGE OF ARTS & SCIENCES

General Education: Social Sciences

Must have 3 courses (from 2 different disciplines)

AAAS 1000 Intro to African & African American Studies (DD)
ANTH 1000 Intro to Anthropology (GD)
ANTH 1001 Aliens, Atlantis and Archaeology
ANTH 1050 Global Understanding (GD)
ANTH 1200 (001) *Anthropology of Monsters, Zombies, and Vampires*
ANTH 1200 (002) *Anthropology of War & Violence*
ANTH 2000 Archaeology Around the World
ANTH 2005 Environmental Anthropology
ANTH 2010 Societies Around the World (GD)
ANTH 2200 Cultural Anthropology (GD)
ANTH 2250 Race & Ethnic Relations (DD)
COMM 1001 Intro to Communications
COMM/LING 2050 English for Global Communication (GD)
ECON 2113 Principles of Microeconomics
ECON 2133 Principles of Macroeconomics (pre-req: ECON 2113)
ETHN 2002 Intro to Ethnic Studies
COMM/LING 2050 English for Global Communication (GD)
GEOG 1000 People, Places, and Environments
GEOG 2003 Geography in the Global Economy
GEOG 2019 Geography of Recreation
GEOG 2100 World Geography: Developed regions (GD)
GEOG 2110 World Geography: Less developed regions (GD)
GEOG 2300 Geography of Environmental Resources
GEOG 2350 Climate Change: Science and Society
GENS 2400 Intro to Gender Studies

GERO/HDFS/SOCW 2400 Intro to Gerontology
HIST 2012 American Business History
HIST 2150 Shop Til You Drop: Consumerism (GD)
HIST 2222 Western Europe Since 1500
HIST 2444 History of Sports in Western Society
INTL 1000 Intro to International Studies
LING 2710 English Grammar
PLAN 1900 Sustainable Cities (GD)
PLAN 2030 Global Cities (GD)
POLS 1010 National Government
POLS 1050 Politics and Global Understanding (GD)
POLS 2010 Intro to Comparative Gov't and Politics (GD)
POLS 2020 International Relations
PSYC 1000 Intro to Psychology
PSYC 2777 Ethnocultural Psychology (pre-req: PSYC 1000) (DD)
RCSC 2601 Leisure in Society
RUSI 2002 Intro to Russian Studies (taught in English)
SECS 1000 Intro to Security Studies
SOCIO 1010 Race, Gender, Class (DD)
SOCIO 1025 Courtship and Marriage
SOCIO 1050 Global Understanding: Sociological perspectives (GD)
SOCIO 2110 Intro to Sociology (DD)
SOCIO 2111 Modern Social Problems (pre-req: SOCIO 2110) (DD)

General Education: Humanities

Must have at least 1 to graduate

CLAS 1300 Greek and Latin	English)	PHIL 1180 Critical Reasoning
CLAS 1500 Classical Mythology (GD)	FORL 2660 Spanish Literature (written in English)	PHIL 1290 Intro to Philosophy of Religion (GD)
CLAS 1600 Sex, Spells & Sacrifices: Religion in the Classical World (GD)	FORL 2661 Latin-American Literature (written in English)	PHIL 1500 Intro to Logic (NOT for students WEAK in MATH)
CLAS 2000 Intro to Classics	FORL 2662 Special Topics in Hispanic Cinemas (GD)	PHIL 2261 Intro to Philosophy of Science
CLAS 2220 Great Works of Ancient Lit: Greece (GD)	FORL 2665 Don Quixote (written in English) (GD)	PHIL 2271 Intro to Philosophy of Art
CLAS 2230 Great Works of Ancient Lit: Rome (GD)	FORL 2666 Latino Texts (written in English) (DD)	PHIL 2274 Business Ethics
CLAS 2400 Women in Classical Antiquity	FORL 2680 German Literature (written in English) (GD)	PHIL 2275 Professional Ethics
CLAS 2500 Greek Tragedy in Translation	FORL 2690 Intro to German Cinema (GD)	PHIL 2280 Intro to Philosophy of Sport
ENGL 1000 Appreciating Literature	FORL 2760 Special Topics in Hispanic Studies	PHIL 2282 Philosophy of Law
ENGL 1500 Topics in Words, Images, and Ideas	GLST 1000 Intro to Global Studies (GD)	PHIL 2453 Existentialism and Phenomenology
ENGL 2000 Interpreting Literature	GRBK 2000 Intro to the Great Books	PHIL 3281 Intro Phil Ethics in Health Care
ENGL 2100 Major British Writers	GRBK 2010/ASIA 2010 Great Books of Modern China	RELI 1000 Intro to Religious Studies
ENGL 2200 Major American Writers	GRBK 2400 Great Books of the Middle Ages & Renaissance	RELI 1500 Use and Abuse of the Bible (DD)
ENGL 2230 Southern Literature	GRBK 2500 Great Books of the Enlightenment	RELI 1600 Sex, Spells & Sacrifices: Religion in the Classical World (GD)
ENGL 2400 World Literature in English (GD)	GRBK 2600 Great Books of the 19 th & 20 th Centuries	RELI 1690 World Religions (GD)
ENGL 2420 Short Story	HIST 1030 World Civilizations to 1500 (GD)	RELI 2340 Religion & Science
ENGL 2470 Topics in Popular Literature	HIST 1031 World Civilizations since 1500 (GD)	RELI 2350 Religion & Sexuality
ENGL 2480 Science Fiction	HIST 1050 American History to 1877 (DD)	RELI 2400 Religion and Film (GD)
ENGL 2570 The Supernatural	HIST 1051 American History since 1877 (DD)	RELI 2691 Classical Islam
ENGL 2630 The Bible as Literature	HIST 2300 Passion and Sex in Asian History	RELI 2692 Buddhism (GD)
ETHN 2001 Intro to Ethnic Studies (DD)	INTL 2003 Intro to Chinese Culture	RELI 2693 Hinduism (GD)
FILM 2900 Intro to Film Studies	LING 2700 Intro to Language Studies (DD)	RELI 2694 Indigenous Religions
FORL 1060 Global Understanding through literature (GD)	LING 2720 Invented Languages	RELI 2695 Intro to Old Testament (GD)
FORL 1551 Intro to Russia: Land of the Firebird (GD)	LING 2740 Language in the USA (DD)	RELI 2696 Intro to New Testament (GD)
FORL 1662 Intro to Hispanic Studies (GD)	MRST 2000 Intro to Medieval and Renaissance Studies	RELI 2697 Judaism (GD)
FORL 2220 Sci-Fi: East and West (GD)	MRST 2400 Intro to Medieval Studies	RUSI 2001 Intro to Russian Studies (taught in English)
FORL 2520 French Cinema Classics (GD)	MRST 2500 Intro to Renaissance Studies	RUSS 2120 Intro to Russian Culture (taught in English)
FORL 2600 Literature in Translation—the Holocaust (GD)	PHIL 1110 Intro to Philosophy	THEA 2235 Global Theater (GD)
FORL 2620 French Literature in Translation (written in English) (GD)	PHIL 1175 Intro to Ethics (*any ethics course good for pre-med students)	
FORL 2622 Francophone Literature of the Americas (written in English) (GD)	PHIL 1176 Intro to Social and Political Philosophy	
FORL 2624 Francophone Literature of Africa (written in		

General Education: Fine Arts

Must have at least 1 to graduate

ART 1001 Color and Design
ART 1105 Ceramics Appreciation
ART 1250 Digital Photography for non-art majors
ART 1827 Photography Changes Everything
ART 1910 Art Appreciation (GD)
COMM 2020 Fundamentals of Speech
COMM 2410 Public Speaking
DNCE 1000 Intro to Dance (DD)
DNCE 1001 Fundamentals of Ballet
ENGL 2815 Intro to Creative Writing
ETHN 2003 Intro to Ethnic Studies
MUSC 1008 Music Theory for non-music majors
MUSC 1018 Music Reading and Fundamentals for non-music majors (2 s.h.)
MUSC 1208 Non-music major group piano I (must contact instructor)
MUSC 1308 Non-music major group guitar I (1 s.h.)
MUSC 1625 Concert Choir (audition only-contact instructor) (1 s.h.)
MUSC 1635 University Chorale (audition only-contact instructor) (1 s.h.)
MUSC 1705 Marching Band
MUSC 1715 Concert Band (1 s.h.)
MUSC 2207 Enjoyment of Music (GD)
MUSC 2249 Music in World Cultures (GD)
MUSC 2257 Jazz Appreciation (DD)
RUSI 2003 Intro to Russian Studies (taught in English)
THEA 1000 Intro to Theater (GD)
THEA 1010 Intro to Acting **typically open to non-majors in spring*
THEA 2015 Voice & Articulation **typically open to non-majors in spring*



Register!

- You will receive your registration PIN upon the completion of the PIER quiz. Use the PIN and register for classes following the guidance on the previous slides.
- For step-by-step instructions on how to register, visit:
<https://thcasadvising.ecu.edu/wp-content/uploads/sites/225/2019/09/How-to-Register-for-Classes51.pdf>
- If you run into registration PROBLEMS, visit:
<https://thcasadvising.ecu.edu/wp-content/uploads/sites/225/2019/08/HANDOUT-registration-problems.pdf>
for solutions.


Important Reminders

- Register for 12 or more hours. Classes that are closed now may open up later so keep checking Banner regularly.
- Check your ECU email daily. See [tutorial](#) on setting up email.
- Explore our [THCAS Academic Advising & Resource Center](#) (AARC) website in addition to your major department's website (linked from the AARC page).
- View your [undergraduate catalog](#) for major requirements, course descriptions, general education, and academic policy.

Final Tips

- Be sure to follow the virtual orientation schedule so you can learn all about your major and college (and perhaps learn about minors or double major opportunities). This is your chance to explore all of the major/minor offerings at ECU!
- Review your [Admissions Checklist](#) to make sure you have taken care of everything.
- Always communicate with your THCAS Academic Advisor and Dr. Tran for any questions or concerns you have now and during the semester.

Questions?

- Consult your THCAS Academic Advisor. You can view your assigned academic advisor in Pirate Port by selecting the contact icon  on the right.
- Consult directly with Dr. Tran if needed.
- If you have not been assigned an advisor, please email THCASadvising@ecu.edu with your name, Banner ID, and intended major along with your question and we will assist you.